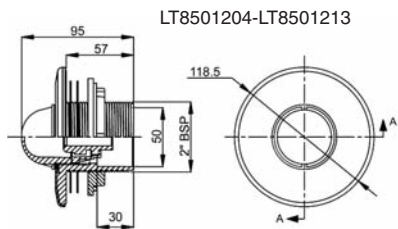
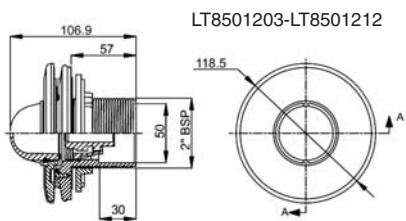
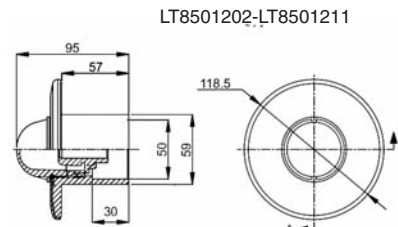
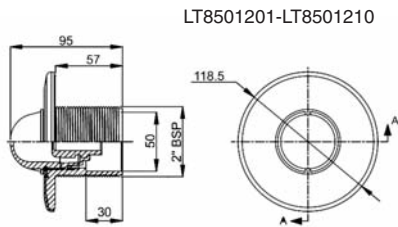


FIBRE OPTIC LIGHTING

Fibre Optic U/W Spot Wall Lenses

Code	Description
LT8501201	Underwater lens for concrete pool, thread/to glue
LT8501202	Underwater lens for concrete pool, glue/to glue
LT8501203	Underwater lens for liner pool
LT8501204	Underwater lens for prefabricated pool
LT8501210	Chrome underwater lens for concrete pool, thread
LT8501211	Chrome underwater lens for concrete pool, to glue
LT8501212	Chrome underwater lens for liner pool
LT8501213	Chrome underwater lens for prefabricated pool
LT8501131	Centering device 12-75 strands
LT8501132	Centering devices 75-300 strands



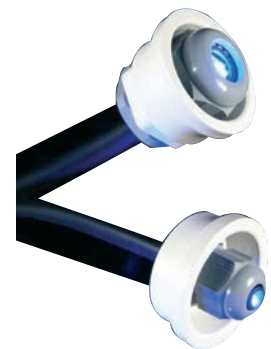
Fibre Optic Spot Wall Lenses

Wall lamps are designed for installation in built or prefabricated swimming pools. They come in standard sizes and with IP68 protection. Each wall lamp is supplied with two types of lens; flat and convex. Centering devices LT8501131 or LT8501132 are needed for installation, depending on the number of fibres.

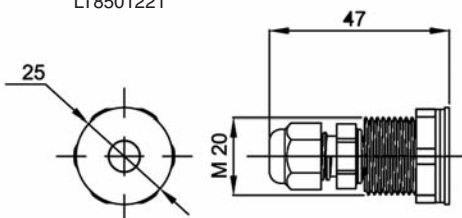
Fibre Optic Mini Underwater Wall Lenses

LT8501220	Stainless steel mini wall lens (up to 75 fibres)
LT8501221	Stainless steel mini wall lens with thread 25mm
LT8501222	Stainless steel mini wall lens with thread 45mm

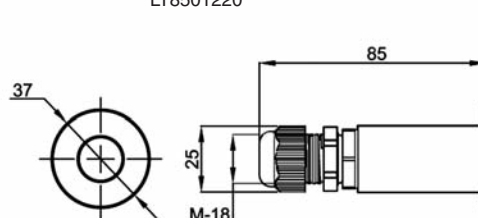
Stainless steel IP65 lamp is ideal for use in steps



LT8501221



LT8501220



Centering Device

The purpose of the centering device is to anchor and centre the fibre in the axis of the lens. It is essential to properly install the following wall lamps:

LT8501201	LT8501210
LT8501202	LT8501211
LT8501203	LT8501212
LT8501204	LT8501213