

# Certikin

*international ltd*



**DOSING EQUIPMENT CATALOGUE**

## Certikin's Quality Statement

It is the policy of Certikin International Ltd to provide products and services which give total customer satisfaction.

The aims and objectives of the company are:

- To place safety and quality first in everything
- To fully understand our suppliers and customers' needs and expectations and to supply precisely the products and services agreed.
- To involve all staff, utilising their skills and abilities to the full, in support of our quality policy.
- To set ourselves a target of annual improvement, based on the simple but fundamental principle of 'do it right first time'.

Neil Murray, Managing Director

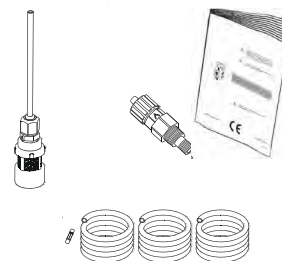
# Dosing pumps

## CDE-FCO - Manual pump with stroke speed adjustment



Pressure <i>bar</i>	Flow <i>l/h</i>
5	5
3	6,5

### ACCESSORY KITS



n. 1	Fuse
n. 1	Foot filter with valve
n. 1	Injection valve
m. 2	Delivery pipe (PVDF)
m. 2	Suction pipe (transparent PVC)
m. 2	Discharge pipe (transparent PVC)
n. 1	Installation manual

ACCESSORY KITS are included with ALL chemical dosing pumps.

# Dosing pumps

## CDE-VCL - Manual pump with stroke speed adjustment and level control



Pressure <i>bar</i>	Flow <i>l/h</i>
5	1
10	4
3	10
2	17

## ALSO AVAILABLE

### CDE-VCLG

Metering pump for flocculant with double measurement scale (24h) with level probe.

From 0 to 300 gr/day  
From 0 to 3000 gr/day

### CDE-VMS EN

Metering pump for algicide with - weekly timer, microprocessor digital controls, LCD display and level probe.

### CDE-VMS PH

Proportional pump driven by internal built-in pH meter (0÷14pH) and level control, supplied without pH probe.

### CDE-VMS RH

Proportional pump driven by internal built-in ORP (ORP) meter (0÷1000mV) and level control, supplied without ORP probe.

## CDE-KCL - Manual pump with stroke length and stroke speed adjustment with level control



Pressure <i>bar</i>	Flow <i>l/h</i>
2	18
5	10
20	01

### ALSO AVAILABLE

**CDE-KIS**  
Proportional pump driven by external digital signal, with level control: to each external pulse corresponds one pump injection.

**CDE-KIC**  
Proportional pump driven by current signal (0-4mA=0pulses; 20mA=max pulses) and level control.

**CDE-KMS PH**  
Proportional pump driven by internal built-in pH meter (0÷14pH) and level control, supplied without pH probe.

**CDE-KMS RH**  
Proportional pump driven by internal built-in ORP (ORP) meter (0÷1000mV) and level control, supplied without ORP probe.

# Dosing pumps

## Multi chemical measurement and control

### CDE-WDPHCL



#### pH & Chlorine

Swimming pool controller with 2 metering pumps for acid (pH) and chlorine (Cl).

Ranges: 0-14 pH and 0-10 mg/l Cl<sub>2</sub>. Chlorine probe to specify at order. Controller settings by wheel. LCD backlight display.

Alarm output, max dosing time alarm, probe check-up, pH priority dosing. Liquid ends in PVDF.

Pressure <i>bar</i>	Flow <i>l/h</i>
5	1
3	10

### CDE-WDPHRH



#### pH & Redox (ORP)

Swimming pool controller with 2 metering pumps for acid (pH) and disinfectant (ORP).

Ranges: 0-14 pH and 0-1000 mV. Controller settings by wheel. LCD backlight display.

Alarm output, max dosing time alarm, probe check-up, pH priority dosing. Liquid ends in PVDF.

Pressure <i>bar</i>	Flow <i>l/h</i>
5	1
3	10

### CDE-WDPHRHS CDE-WDPHCLS CDE-WDPHBS



#### pH / Redox (ORP)

Swimming pool controller with one metering pump for acid (pH) and one 230VAC output driven by Redox (ORP) for salt generator or dry feeder.

#### Section pH / Redox

Pressure <i>bar</i>	Flow <i>l/h</i>
5	1
3	10

#### pH / Cl

Swimming pool controller with one metering pump for acid (pH) and one 230VAC output driven by Chlorine for salt generator or dry feeder.

#### pH / Br

Swimming pool controller with one metering pump for acid (pH) and one 230VAC output driven by bromine for dry feeder (brominator). Liquid ends in PVDF.

Solenoid Valve	Consumption
VAC	A
230	10

Probes to specify at order.

# Multi parameter controllers

## 5-CHANNEL



### CDE-MAX5

**(pH / Total chlorine / Free chlorine / Combined chlorine / Redox / °C / Turbidity / Conductivity )**

MAX5 is a multiple digital controller system. It reads and controls up to 5 channels that can be programmed to control pH - ORP - Chlorine - Turbidity - Temperature - Total Chlorine.

- pH: from 0 to 14 pH
- ORP (Redox): from 0 to 1000 mV
- Total Chlorine: from 0 to 10 mg/l
- Free Chlorine: from 0 to 10 mg/l
- Combined Chlorine: from 0 to 10 mg/l
- Turbidity: from 0 to 30 NTU
- Temperature: from 0 to 100 °C
- Conductivity: from 0 to 300 mS

## 2-CHANNEL

### CDE-LDPHxx Series Digital Controllers

Digital controller with microprocessor and LCD backlight display. Using a revolutionary wheel the controller can be easily programmed.

3 proportional setpoints and 2 proportional On/Off or timered (PWM) setpoints. Stand-by input and max dosing time alarm. CHLORINE / BROMINE selector. Alarm for probe failure. General alarm output.



**CDE-LDPHRH** pH (0÷14) - ORP (0÷1000mV) - °C (0÷99,9)

**CDE-LDPHCL\*** pH(0÷14) - Chlorine (0÷10 mg/l Cl<sub>2</sub>)\* - °C (0÷99,9)

**CDE-LDPHO2** pH (0÷14) - O2 (0÷200 mg/l H<sub>2</sub>O<sub>2</sub>) - °C (0÷99,9)

**CDE-LDPRC** pH (0÷14) - Chlorine (0÷10 mg/l Cl<sub>2</sub>) - °C (0÷99,9) and ORP only reading (0÷1000mV)

### CDE-LPHRHC

Digital controller for pH and Redox (ORP) measure and pH and Calculated Free Chlorine control.

LCD backlight display. Two programmable on/off or digital proportional outputs, feed limit alarm (max dosing alarm), programmable delay at power on for probe polarisation, stand-by for no flow interlock, On/Off Set Points and proportional timer (PWM), high and low alarm.

0-14 pH scale; 0-1000 mV scale; 0-2.5 mg/l Cl<sub>2</sub> scale

Working range for Calculated Free Chlorine: 6.8-8.00 pH and 500-800 mV

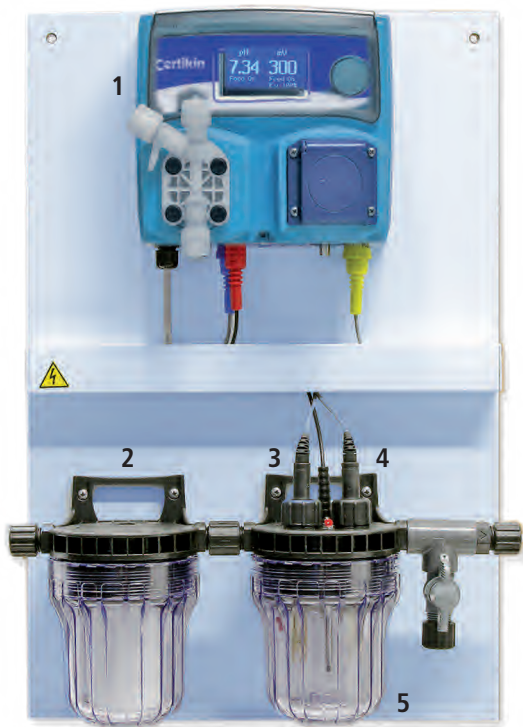


Probes to specify at order.

# Board mounted equipment

FOR DOMESTIC & COMMERCIAL FEEDER APPLICATIONS

## CDE-PA- WDPHEV

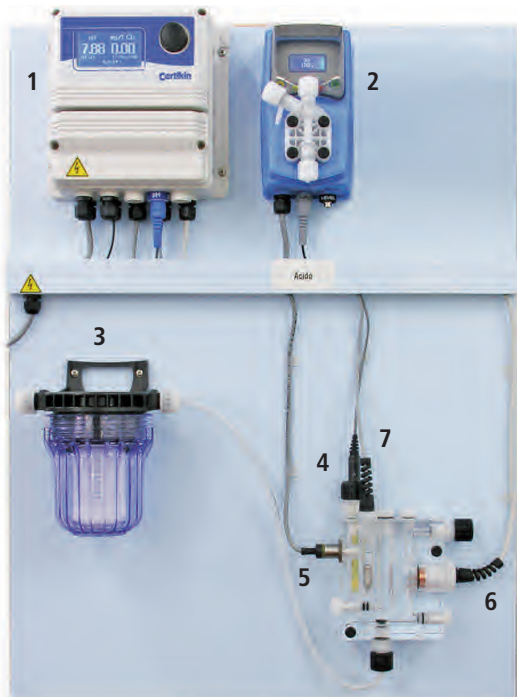


**For pH and ORP control.  
Salt chlorine generator or dry  
feeder (brominator) output.**

1. Controller WDPHRHS
2. NFIL Filter
3. Probe Redox ERHS
4. Probe pH EPHS
5. Probe Holder NPED4

Dimensions: 400x600 mm

## CDE-PA- LDPHCLV



**pH correction & free chlorine/  
bromine proportional control of  
a dry feeder (Chlorine/Bromine)  
output**

1. Controller
2. Dosing Pump
3. NFIL Filter
4. Probe pH EPHS
5. Proximity switch SEPR
6. Temperature probe ETEPT
7. Chlorine probe either:  
> ECL6 or  
> ECL3S/10

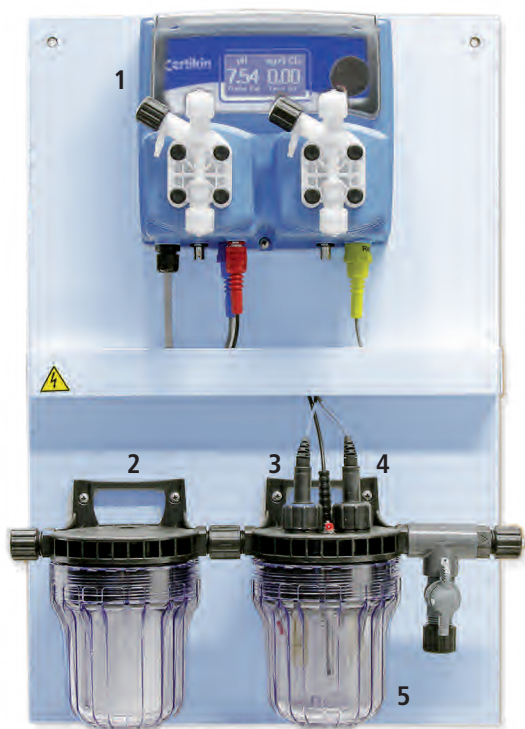
See page 12 for more information on chlorine probes.

Dimensions: 600x800 mm

# Board mounted equipment

FOR DOMESTIC & LIGHT COMMERCIAL APPLICATIONS

## CDE-PA- WDPHRH

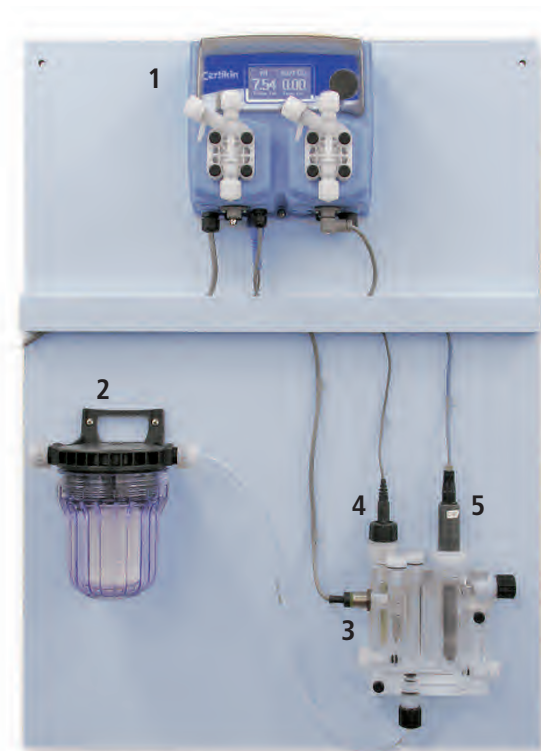


### For pH and Redox control.

1. Controller WDPHRH
2. NFIL Filter
3. Probe Redox ERHS
4. Probe pH EPHS
5. Probe Holder NPED4

Dimensions: 400x600 mm

## CDE-PA- WDPHCL



### For pH and Chlorine control

1. Controller WDPHCL
2. NFIL Filter
3. Proximity switch SEPR
4. Probe pH EPHS
5. Chlorine probe either:  
> ECL6 or  
> ECL3S/10

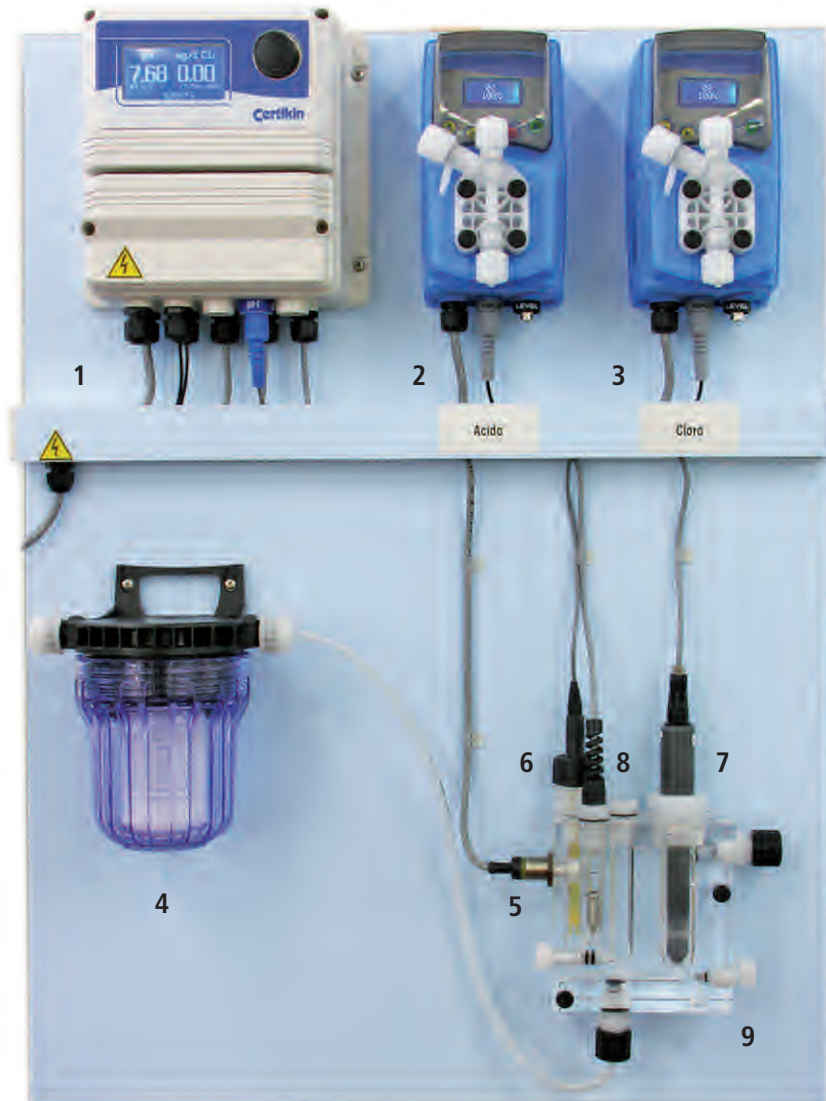
See page 12 for more information on chlorine probes.

Dimensions: 500x700 mm

# Control and dosing

FOR COMMERCIAL APPLICATIONS

## CDE-PA- LDPHCLO



**For pH and chlorine proportional control.  
Medium size swimming pools.**

1. Controller LDPHCL
2. Dosing Pump acid VMS MF 03 10 (10 l/h)
3. Dosing Pump chlorine VMS MF 02 17 (17 l/h)
4. NFIL Filter
5. Proximity sensor SEPR
6. Probe pH EPHS
7. Temperature probe ETEPT
8. Chlorine Probe - either:
  - > ECL6
  - > ECL3S/10

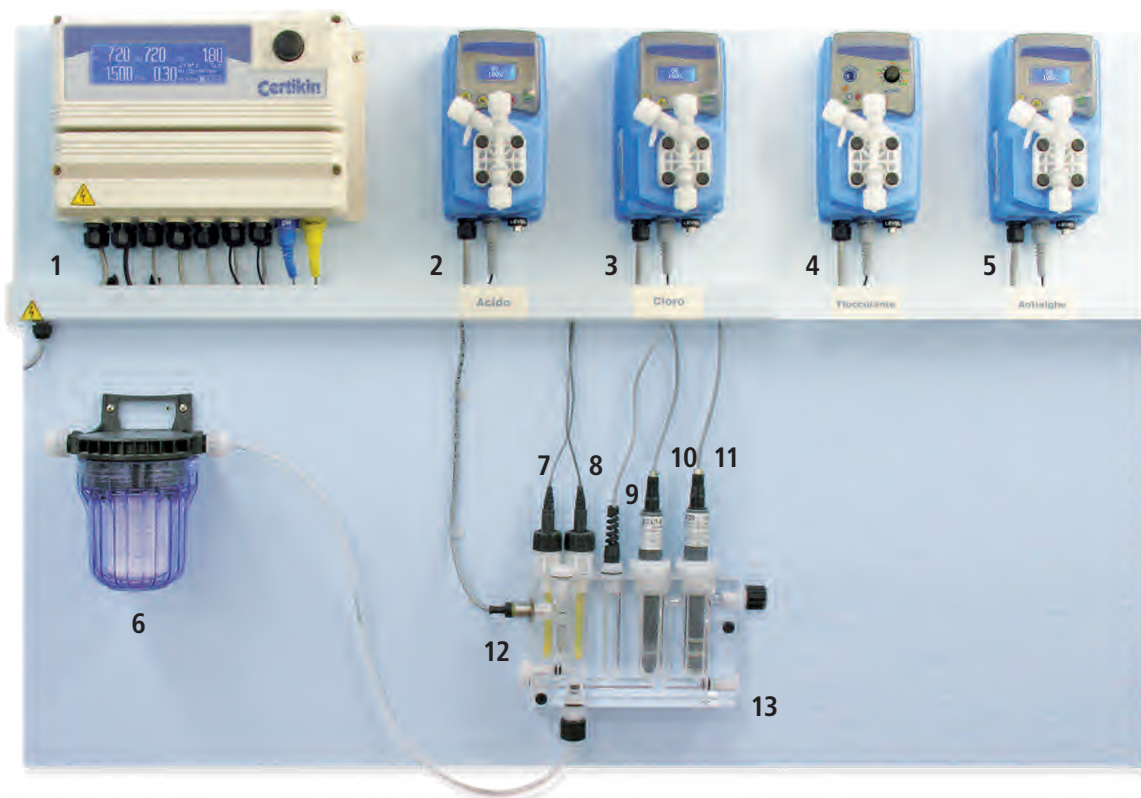
See page 12 for more information on chlorine probes.

Dimensions: 600x800 mm

# Control and dosing

FOR HEAVY COMMERCIAL APPLICATIONS

## CDE-PA-M5DB



**For pH, ORP, Free chlorine, Total Chlorine, Combined chlorine, Temperature, Flocculant and Algicide.**

1. Multiparameters controller MAX5 (pH, Cl, Clt, T°)
2. Dosing Pump acid VMS MF 03 10
3. Dosing Pump chlorine VMS MF 02 17
4. Dosing Pump flocculant VCLG
5. Dosing Pump algicide VMS EN 07 06
6. NFIL Filter
7. Probe pH EPHS
8. Probe Redox ERHS
9. Temperature probe ETEPT
10. Probe free chlorine ECL3S/10
11. Probe chlorine ECL8/10
12. Proximity sensor SEPR
13. Probes holder PEF22

Dimensions: 1000x800 mm

# Commercial systems



## Control board

1. Controller(s) from our range
2. NFIL Filter
3. Probes and probe holder from our range

All panel mounted to suit your specification.



## Pump board

Panel mounted board. Dosing pumps selected from wall mount range. Board shown includes multifunction valves which offer:

1. Pressure Relief
2. Pressure Sustaining
3. Syphon/Bleed



## Tank Set

Foot mounted dosing pump and electronic agitator mounted on chemical dosing tank which is banded to prevent chemical spillage.

Various dosing tank and bund sizes available.

# Worldwide controlling system

LAN - GPRS/GSM - Webserver with HOSTING service

## CDE-MAX5



### CDE-MAX5 RS485 + USB version

The core of your communication system is MAX5 integrated. The software included makes the connection between controller and PC by RS485 or a USB port.

### CDE-MAX5 GSM + RS485 + USB version

GSM option is available for multiple MAX5 remote control.

The communication software included allows you to control one or more controllers even if they are installed in different plants. More over you can always make the connection between the controller and PC by RS485 or a USB port. GSM option features SMS communication and SMS alarm.

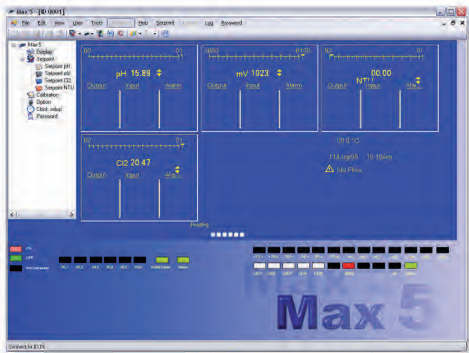
### Options: ETHERNET + RS485 + USB

Internet: to log-in all you need is a PC, the remote management software and either local or remote network access. You can set the device to trigger email alerts. You can also access the Internet either by plugging a RS485 cable into your computer or via USB.

### CDE-MAX5 WEBSERVER + HOSTING Service

Internet: just a web browser for remote and reliable control of one or more MAX5 controllers. NO software or application needed. We host your controller's interface! Otherwise you can always make the connection between the controller and PC by RS485 or a USB port.

Hosting service operates with ETHERNET or GPRS / GSM option.



# Accessories



## CDE-EPHS

pH electrode for pressures up to 7bar/  
70°C (3.5bar/80°C).  
0.8m cable. Epoxy body.  
Minimum 100µS.



## CDE-ERHS

ORP electrode for pressures up to  
7bar/70°C (3.5bar/80°C).  
0.8m cable. Epoxy body.  
Minimum 100µS.



## BUFFER SOLUTIONS

Buffer solutions for probe calibration.



## CDE-ECL8

Total chlorine amperometric cell (organic and inorganic),  
from 0 to 2 mg/l ; from 0 to 20 mg/l, pH and temperature  
compensated.



## CDE-ECL6 - ECL12

Free chlorine / bromine amperometric cell  
(organic and inorganic), from 0 to 10 mg/l.  
Flow switch and flow adjustment.  
Electrode holder for pH, Redox and temperature.  
With proximity switch mod. SEPR. 6x8 fittings.



## CDE-ECL3S/10

Free chlorine amperometric cell (organic and inorganic),  
from 0 to 10 mg/l, pH and temperature compensated.



## CDE-ETEPT

Temperature probe (0°C÷100 °C, max 10bar).

# Accessories



## CDE-NFIL CA

5" filter with carbon activated filter cartridge. 6x8 fittings.



## CDE-NFIL

Filter with cartridge. Washable. PET (60 μ). 6x8 fittings.



## CDE-NPED4

Off-line electrode holder for EPH, ERH electrodes. Temperature max 50° C, max pressure 5bar with flow sensor with N.O. contact. 6x8 fittings.



## CDE-PEF22

Free, total chlorine, pH, ORP and Temperature probes holder with flow switch and flow adjustment. 6x8 fittings. Best for MAX5 digital controller.



## CDE-PEF1

Off-line electrode holder for ECL1/2/3/8/9/10/11 and pH, Redox and temperature, with flow switch and flow regulation. With proximity switch mod. SEPR. 6X8 fittings.



## CDE-EVLA

Solenoid valve for dry feeder. 1/2" fitting.



## CDE-PELC

PVDF in-line electrode holder for pH / Redox electrodes with 1/2" or 3/4" thread. For saddle connection.



## CDE-PEL

PVDF in-line electrode holder for pH / Redox electrodes with 1/2" or 3/4" thread. For "T" connection.

# Accessories



## CDE-MIXV/8

High speed mixer  
1400 RPM.  
AISI shaft-PVC coated,  
length available: 630  
mm.  
Marine impeller,  
diameter 70 mm.



## CDE-MIX/8

Low speed mixer  
65/200/400 RPM.  
AISI shaft-PVC coated,  
different lengths  
available  
(630-730-980 mm).  
3-blade impeller,  
diameter 150 mm.



## CDE-MIX/MAN

Manual mixer.  
PVC shaft,  
length available: 390 mm.  
Impeller diameter 90 mm.



## CDE-LASP/x

Suction lances  
with level control,  
for tanks up to  
25 litres (suitable for  
carboys).



## CDE-LASP1/x

Suction lances  
with level control,  
for tanks up to  
1000 litres.



## CDE-LINR

1/2" injection lance for dosing sodium  
hypochlorite in hard water. PVC body.  
Viton® or EPDM o-ring. Ball valve.



## CHEMICAL TANKS & SAFETY BUNDS

Polyethylene, anti-UV for chemicals. Complete chemical  
tanks with safety bunds.



## INJECTION VALVE 1/2"

Injection valve (PVDF).



## MF MULTIFUNCTIONS VALVE

Multifunction valve (pressure, safety,  
antisiphon and bleed) 1/2" connections  
for different hose diameters. Pressure  
range adjustable from 1 to 5 bar for  
pressure valve operating mode, from  
1 to 18 bar for safety valve operating  
mode. Discharge connection  
3/8" 4x6. Viton® or EPDM o-ring.  
PVDF body.



## LEVEL PROBE

Level probe with foot filter and BNC  
connector (full natural PVDF).



Certikin International Ltd • Witan Park • Avenue  
Two • Station Lane Industrial Estate • Witney •  
Oxon • OX28 4FJ • Reg. in England No. 3047290  
E-mail: enquiries@certikin.co.uk

Certikin France. - ZI de Torremilla - 219 Rue Henry  
POTEZ - 66000 PERPIGNAN Tél : 04 68 52 64 30  
Fax: 04 68 52 64 30 - sentex@sentex-france.com

Certikin Pool Ibérica S.L.U. P.I. Mas Puigvert-Oest  
19-20 Parc.3 - 08389 Palafofols (BARCELONA) Tel:  
902 02 03 42 Fax: 93 764 53 97

Certikin Italia SpA - Via Gavardina 96/98/100  
25010 Ponte S.Marco (BS) Italia - Tel. +39  
030 9980088 Fax +39 030 9637619 - P.I.  
00813790987 - Reg. Imp. di Brescia 00813790987  
- Capitale Sociale 300.000,00 int. vers.

Certikin India  
7a Dyvasandra Industrial Estate  
3rd Cross  
Singayanapalya  
Bangalore India 560048  
T + 91 80 4094 3024  
F + 91 80 4094 3025

Certikin Middle East  
Jebel Ali Free zone  
Dubai  
T+ 971 4 8861404  
F + 971 4 8861004