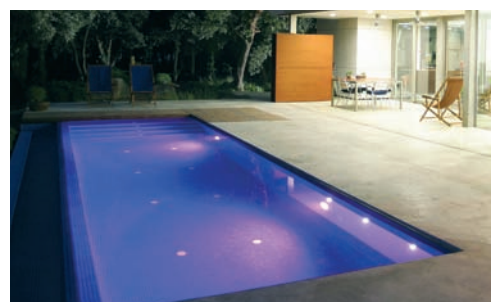
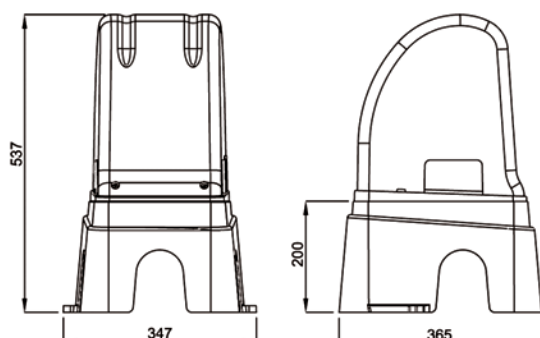


FIBRE OPTIC LIGHTING



Fibre Optic Generators

Code	Description
LT8501001	HM generator / illuminator 8 colours 150W
LT8501002	H generator / illuminator 8 colours 250W
LT8501501	Spare bulb 150W for HM generator (metal Halide 6000 hrs life approx)
LT8501502	Spare bulb 250W for H generator (halogen 1000 hrs life approx)



Fibre Optic Generators

Certikin's generators are light sources that provide optimum light intensity for fibre optic installations. Equipped with special lamps, these light generators have an electronic control circuit to activate the following operations: On/off, colour selection and automatic function modes.

The generators have an IPX4 protection rating and are therefore suitable for outdoor installation.

Advantages

Large 600 fibre capacity – less generators are required in any given installation.

Remote control – included for all generators.

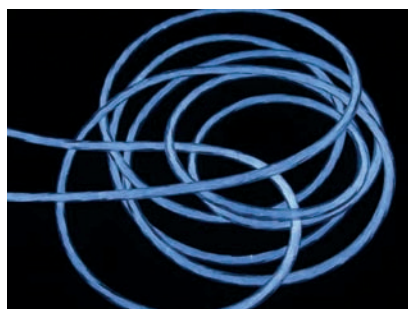
Auto synchronization for multiple generators. The generators are auto synchronizing without the need for master / slave generators. A simple cable connection is all that's required regardless of generator type and generators from different ranges may be connected within a single installation.

Features

- **Eight different colours** – White, Dark Green, Cyan, Pink, Blue, Lime Green, Yellow and Aquamarine
- **Colour change** – the use of a step by step motor allows the colour to be controlled with instant changes
- **Sequential colour change with variable timing by colour** – allows colour changes with predetermined duration of between 10 seconds-10 minutes which can be set individually for each colour via the generator.
- **Variable speed continual colour change** – in this mode the colour wheel can be set to a constant speed of anywhere between 30-180 seconds per turn. This speed is programmable via the generator.
- **Timed off switch** – variable timer with automatic off switch adjustable for half hour to 4 hour operation.
- **Start up functionality** –The generator will always start up in the same operating mode as the last time the power supply was switched off , following any interruption to the power supply (including power cuts or where an external timer is in use).
- **Optional Keypad disablement function** – for public pools where the generator is located within reach of the swimmers, the keypad can be disabled to avoid accidental interference. Please contact us for details

Should you require a proposal for any installation please contact us.

FIBRE OPTIC LIGHTING



There are two types of fibre optic cable: end transmission cables and side transmission cables also known as perimeter fibre cables. The end transmission cables transport light from the generator to different receiver elements, such as wall lights, waterfalls, stars etc. They are manufactured with a black PVC cover indicating the number of fibres. Perimeter fibre cables are manufactured with a transparent cover and have the special feature of transmitting light along their whole length.



The guide rails enable the perimeter fibre to be installed around the pool. They are flexible for easy installation and manufactured in transparent PVC

End Emitting Optic Cable - For Spot Lights

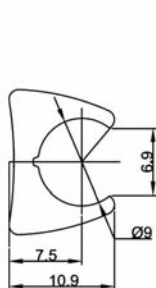
Code	Description
LT8501100	Cable single fibre pmma Ø 0,75 mm
LT8501101	12 strands, per metre
LT8501102	12 strands, 50 metre roll
LT8501103	12 strands, 100 metre roll
LT8501105	25 strands, per metre
LT8501106	25 strands, 50 metre roll
LT8501107	25 strands, 100 metre roll
LT8501109	50 strands, per metre
LT8501110	50 strands, 50 metre roll
LT8501111	50 strands, 100 metre roll
LT8501113	75 strands, per metre
LT8501114	75 strands, 50 metre roll
LT8501115	75 strands, 100 metre roll
LT8501117	100 strands, per metre
LT8501118	100 strands, 50 metre roll
LT8501119	100 strands, 100 metre roll
LT8501120	150 strands, per metre
LT8501121	150 strands, 50 metre roll
LT8501122	150 strands, 100 metre roll

Side Emitting Optic Cable - For Perimeter Lighting

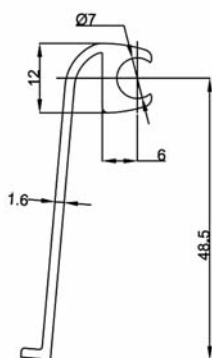
LT8501140	42-fibre, cabled fibre. per metre
LT8501141	42-fibre, cabled fibre. 50 metre roll
LT8501142	42-fibre, cabled fibre. 100 metre roll
LT8501143	42-fibre, cabled fibre. 200 metre roll
LT8501144	42-fibre, cabled fibre. 300 metre roll
LT8501150	42-fibre, linear fibre. per metre
LT8501151	42-fibre, linear fibre. 50 metre roll
LT8501152	42-fibre, linear fibre. 100 metre roll
LT8501153	42-fibre, linear fibre. 200 metre roll
LT8501154	42-fibre, linear fibre. 300 metre roll
LT8501160	80-fibre, cabled fibre. per metre
LT8501155	144-fibre, cabled fibre. per metre

Guide Tracks For Perimeter Fibre

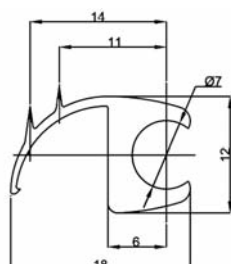
LT8501161	15m track for 42 strand cable - concrete pool
LT8501162	15m track for 42 strand cable - new pool
LT8501163	15m track for 42 strand cable - liner pool
LT8501164	50m track for 144-fibre cable, code 8501155
LT8501165	50m track for 80-fibre cable, code 8501160



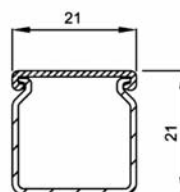
LT8501161



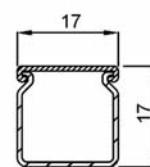
LT8501162



LT8501163



LT8501164

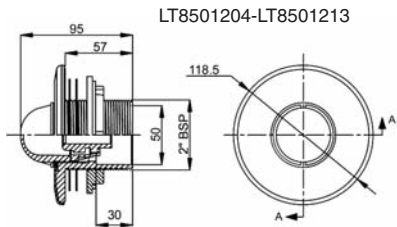
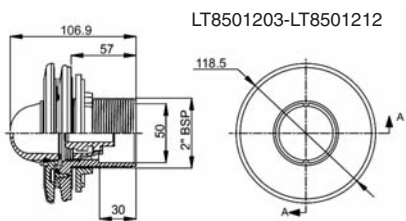
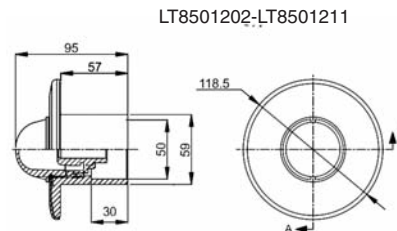
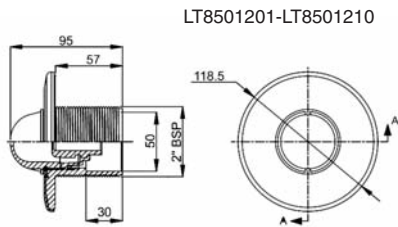


LT8501165

FIBRE OPTIC LIGHTING

Fibre Optic U/W Spot Wall Lenses

Code	Description
LT8501201	Underwater lens for concrete pool, thread/to glue
LT8501202	Underwater lens for concrete pool, glue/to glue
LT8501203	Underwater lens for liner pool
LT8501204	Underwater lens for prefabricated pool
LT8501210	Chrome underwater lens for concrete pool, thread
LT8501211	Chrome underwater lens for concrete pool, to glue
LT8501212	Chrome underwater lens for liner pool
LT8501213	Chrome underwater lens for prefabricated pool
LT8501131	Centering device 12-75 strands
LT8501132	Centering devices 75-300 strands



Fibre Optic Spot Wall Lenses

Wall lamps are designed for installation in built or prefabricated swimming pools. They come in standard sizes and with IP68 protection. Each wall lamp is supplied with two types of lens; flat and convex. Centering devices LT8501131 or LT8501132 are needed for installation, depending on the number of fibres.

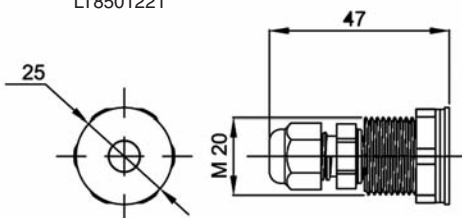
Fibre Optic Mini Underwater Wall Lenses

LT8501220	Stainless steel mini wall lens (up to 75 fibres)
LT8501221	Stainless steel mini wall lens with thread 25mm
LT8501222	Stainless steel mini wall lens with thread 45mm

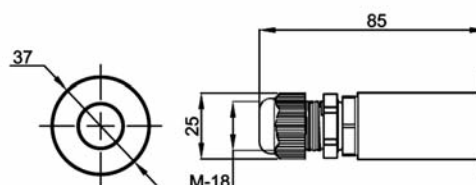
Stainless steel IP65 lamp is ideal for use in steps



LT8501221



LT8501220



Centering Device

The purpose of the centering device is to anchor and centre the fibre in the axis of the lens. It is essential to properly install the following wall lamps:

LT8501201	LT8501210
LT8501202	LT8501211
LT8501203	LT8501212
LT8501204	LT8501213