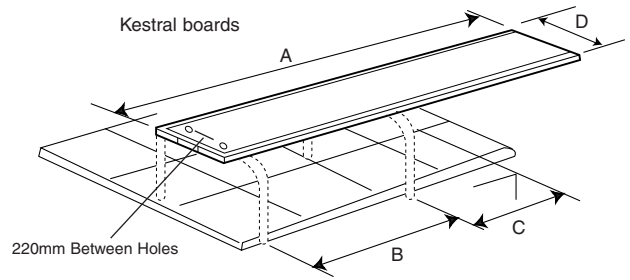
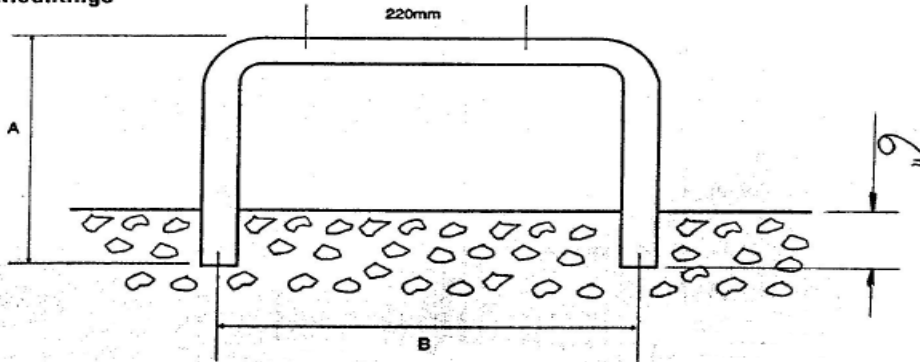


Diving Board



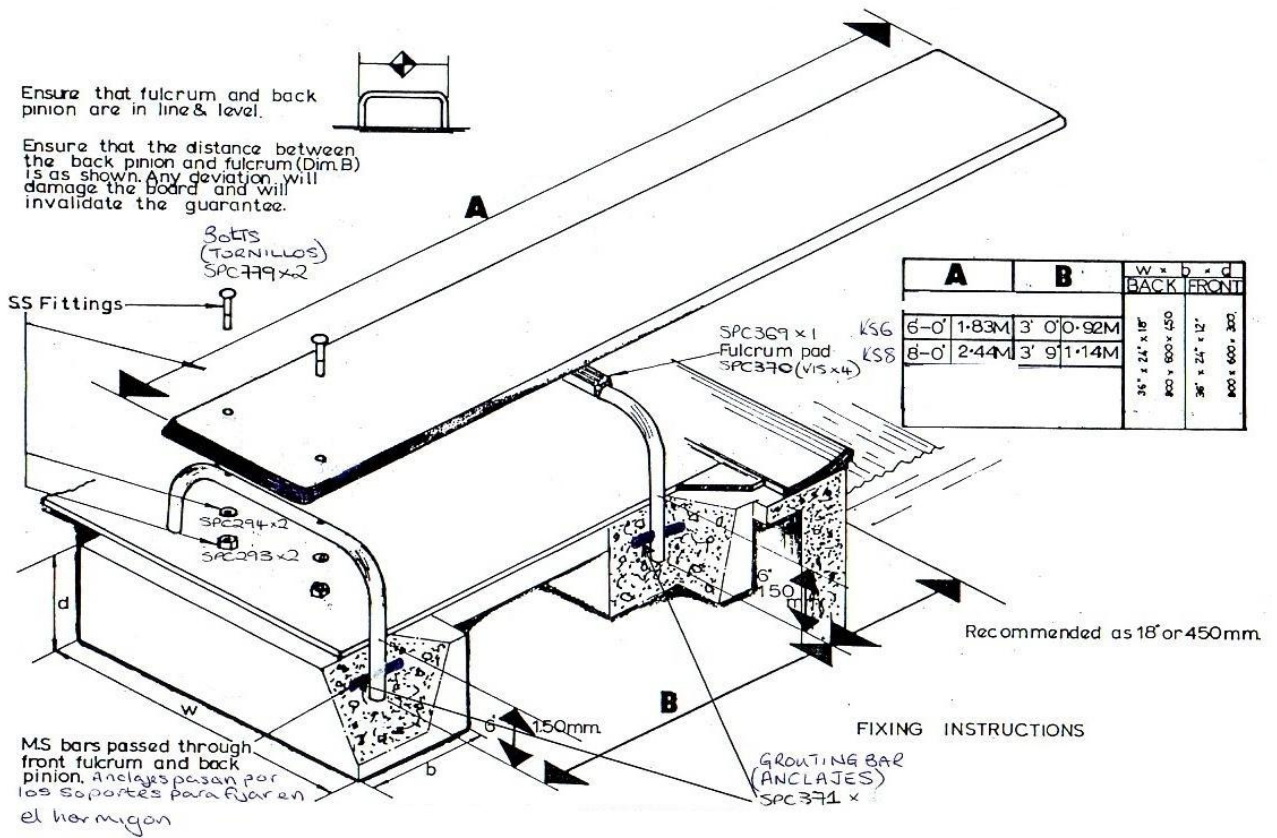
Model	A	B	C	D
KS6	6'0" / 1.846mtr	920mm	460mm	340mm
KS8	8'0" / 2.462mtr	1140mm	460mm	340mm
KS10A	10'0" / 3.077mtr	1320mm	460mm	340mm

Mountings



Model	Tube Size	A	B	
CK119S	38mm	381mm	571mm	For KS4 / KS6
CK115	38mm	533mm	571mm	For KS8 / KS10

Installation



In the interests of safety, the recommended SPATA guidelines and standards should be followed.

Reference to the 'Cage of Safety' is an area of water of sufficient size and depth within the deep end of a pool of various dimensions that allows normal deck level diving with safety.

Irrespective of the shape or profile of the pool, the 'Cage of Safety' shall be maintained. See SPATA standards.