

WATER FEATURES



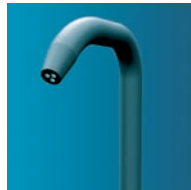
For a relaxing massage or an attractive water feature, a water curtain is an ideal addition to any pool

Guide To Selecting Water Features

- STEP 1** Installation Kit
- STEP 2** Features / Assembly Kit
- STEP 3** Select Pump For Required Duty
- STEP 4** Air Switch (optional)
- STEP 5** Don't forget suction grilles



Step 1



Step 2

STEP 1 - Installation Kits - Water Curtains

Code	Description
FL91533	Curtain Installation kit

STEP 2 - Water Curtains @ 30m³/hr

FL92618	Cobra Curtain 30m ³ /hr
FL93385	Straight Curtain 30m ³ /hr
FL94460	Flat Jet Curtain 30m ³ /hr
FL94462	Tri Jet Curtain 30m ³ /hr

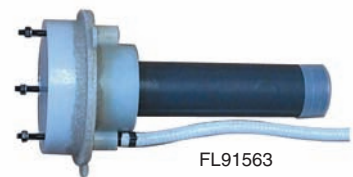
Note: Water Curtains are manufactured in grade 316 stainless steel with a brushed finish. White powder coated is available - please contact Certikin for more details.



Suitable for wall and floor installations



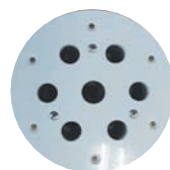
Step 1
FL91352



FL91563

STEP 1 - Installation Kits - Massage Jets

Code	Description
FL91563	Wall Installation kit for concrete / tile & liner pools (DN 63)
FL91352	Floor Installation kit 90° for concrete / tile & liner pools (DN63)



Step 2



STEP 2 - Massage Nozzles - Massage Jets @ 22m³/hr

FL91565	Massage nozzle 22m ³ /hr - concrete / tile
FL91566	Massage nozzle 22m ³ /hr concrete / liner

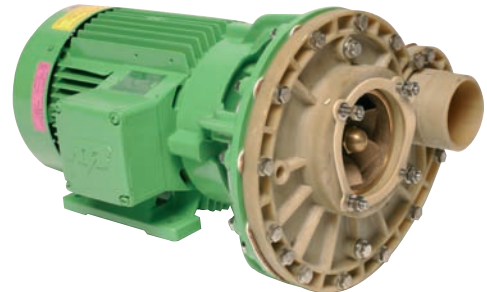
WATER FEATURES

Features

- Fluvo pump kits consist of centrifugal pump, motor switchgear cabinet with pneumatic control.
- Pumps available in 50Hz single and three phase motors
- Pumps suitable for salt water

STEP 3 - Pump Kits

Code	Description
FL0756013/1	0.75kW 230V 1 phase pump Q@10m 24m ³ /hr
FL0756013	0.75kW 400v 3 phase pump Q@10m 24m ³ /hr
FL94446/1	1.90kW 230v 1 phase pump Q@10m 48m ³ /hr
FL94446	1.90kW 400v 3 phase pump Q@10m 48m ³ /hr



STEP 4 - Air Switch - Installation Kit

FL93748	Air switch installation kit for concrete / tile & liner pools
---------	---



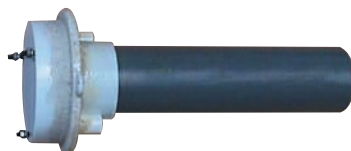
Step 4

STEP 4 - Air Switch Button

FL93749	Air switch button - concrete / tile pool
FL93750	Air switch button - concrete / liner pool



Step 4



Step 5

STEP 5 - Suction Grilles - Installation Kits

Code	Description
FL91538	Installation kit for concrete / tile & liner pools (DN100)



Step 5

STEP 5 - Suction Grille

FL91539	Suction grille - concrete / tile pool (max 15m ³ /hr)
FL91561	Suction grille - concrete / liner pool (max 15m ³ /hr)

Material - White ABS

Maximum flow 15m³/hr @ 0.5m/s

Larger Grilles are available for multiple features. Please contact us for a quotation.

Suction Grilles:

All suction grilles that are capable of being connected to the full suction pressure of the pump system, should be connected to at least two separate outlets at least 2 metres apart.

AIR BUBBLE FEATURES



Guide To Selecting Bubble Features

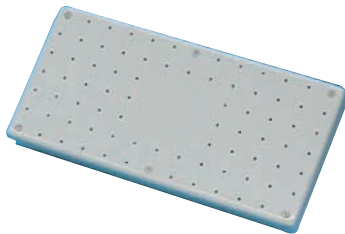
- STEP 1** Installation Kit
- STEP 2** Features / Assembly Kit
- STEP 3** Select Air Blower For Required Duty
- STEP 4** Air Switch (optional)

STEP 1 - Installation Kits - Air Pad / Bubble Seat

Code	Description
FL93937	Installation kit - concrete / tile pools (DN 32)
FL93938	Installation kit - concrete / liner pools (DN 32)



Step 1



Step 2

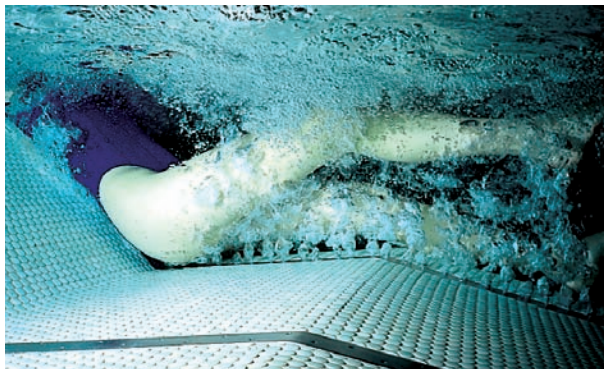
STEP 2 - Air Pad / Bubble Seat @ 45m³/hr

FL93939	Air pad 500 x 250mm - concrete / tile pools
FL93950	Air pad 500 x 250mm - concrete / liner pools

Air pad material: White ABS

Alternative sizes available in 316 St/St

All air lines should include an air loop at least 500mm above water level.



STEP 1 & STEP 2 - Air Lounger @ 45m³/hr

Code	Description
FL91804	Grade 316 S/S. Air lounge includes installation fixings (DN 50)



Step 3

STEP 3 - Air Blower @ 45m³/hr & 90m³/hr

FL95112	0.9kW Air blower @45m ³ /hr connections 1.5"
FL93666	1.2kW Air blower @90m ³ /hr connections 2"

Note: Air blowers 50Hz 3 phase electrical supply.
Please call Certikin for 1 phase options.